

The Heidelberger

Published by the Heidelberg Heritage Society
Wernersville, Pennsylvania

Vol. 31, No. 2

September 2007

SEPTEMBER MEETING

Thursday, September 27, 2007 - 7:30 P.M.
LERCH TAVERN

THE UNKNOWN AMERICAN REVOLUTION

Dr. Carl Constein
Historian & Educator

OCTOBER MEETING

WEDNESDAY, OCTOBER 24, 2007 - 6:00 P.M.
LERCH TAVERN

ANNUAL SAUERKRAUT SUPPER

\$ 9.00 per Person

Catered by BIG JOHN

Reservations Required by Tuesday October 16
Call Phyllis Daniels 610-678-0229



Pearl Ann
Boyer

Sharon
Matlack

Donald
Moyer

Carl
Reidler

Eric
Knorr

STATION CLEANING CREW

APPLE DUMPLINGS

TUESDAY, OCTOBER 30, 2007

\$2.50 Each

Place Orders by Friday, October 19
Call Phyllis Daniels 610-678-0229

Pick-Up at Lerch Tavern
11:00 a.m. to 6:00 p.m.

31st Christmas Bazaar

Lerch Tavern

FRIDAY, NOVEMBER 9, - 9 a.m. to 6 p.m.
SATURDAY, NOVEMBER 10, - 9 a.m. to 4 p.m.

Crafts, Plants, Flowers
Cakes, Pies, Cookies, Candy
Jams, Jellies, Relishes
RAFFLE PRIZES

Lunch at the Lerch Cafe

**31st ANNUAL CHRISTMAS BAZAAR
NOVEMBER 9 and 10, 2007**

Volunteers are needed for various duties...
Please Help... Call Frances Sheidy (610 693-5517)
Set-Up & Moving Day, Wednesday Oct. 31, 8 a.m.
Homemade jellies must be brought to the Tavern for pricing on Monday, Nov. 5th, 9 a.m. to 12 noon.
Handmade crafts and Tavern Set-up will start at 8 a.m. on Wednesday, Nov. 7th
Outside & Vendor Crafts will be accepted on Thursday, Nov. 8th, 10 a.m. to 4 p.m.
Baked goods and candies etc. should be brought by 8:45 a.m. on the mornings of the Bazaar, Friday & Saturday, Nov. 9th & 10th.
Raffle Donation \$1.00 per Ticket
Drawing: Saturday, Nov. 10th, 4:00 p.m.
For Additional Tickets.....

Call Frances Sheidy (610 693-5517)

CLEAN-UP, INVENTORY & PACK-UP

Monday, Nov. 12th, starting at 9 a.m.
Tuesday, Nov. 13th, starting at 9 a.m.
Wednesday Nov. 14th starting at 8 a.m.

NEW MEMBERS

Sarah Peques Gibson Jefferson, MD
Mary E. Cunningham Sinking Spring, PA
Daniel Kuhn Wernersville, PA
Robert & Merrilee Sheeler Wernersville, PA

NEW LIFE MEMBER

Eric Ray Wernersville, PA

NECROLOGY

Calvin Sholley 1906 - 2007
Alice Sawyer 1919 - 2007
May Coleman Burkert 1934 - 2007
Evelyn Bossong Willetts Baldorf 1922 - 2007

GIFTS

Generous gifts were given to the Station Restoration Fund by Evelyn Baldorf and by the WHS Class of 1942 in memory of Jerry Wagner.

MAY SANDWICH SALE

	Income	Expenses
347 Sandwiches	\$1214.50	\$675.30
Donations	5.00	-----
NET PROFIT	\$ 544.20	

BAKELESS BAKE SALE REPORT

\$2501.00 !!!!

Many Thanks to All !!!



Mollie Snyder Jane Spittler Irene Snyder Emily Werner
The Chow Chow Rangers



Connie Fritz Mary Ann Miller Rod Daniels Lee Potteiger
The Sauerkraut Brigade

A Taste of Wernersville

Visitors were again welcomed to the second annual recognition celebration of our community. Our Society opened the doors of the Lerch Tavern and the Train Station on Saturday, June 9th as a wandering trolley bus brought the guests all around town. Our Tavern Stop featured a book-signing event by Earl Ibach for his *Tulpehocken Cigarama*.

FLAG DAY

A fitting tribute was paid by the community at our annual Flag Day Celebration. Highlights of the event were the address by Judy Schwenk, Chairperson, Berks County Commissioner and the display and firing of toy cannons by Historian and Collector, Paul Troutman. Strong support was again provided by local Scout troops, the POSofA color guard and the Trinity/Community Orchestra



“The CLUB”

The “*Lebanon Valley Sportsmen Association*” is the official title of this Incorporation, but in our house, and in many others within our community it was simply known as “*The Club*” or “*The Gun Club*”. If your Dad wasn’t at home on a Saturday, Sunday or Holiday... Odds were that he was “up at the Club.” In many ways this organization and its facilities served our local men in much the same way as the backyard clubs where neighborhood boys of fictional stories gathered to play... But there is much more to the story of the LVSA.

An account of the Association’s origin was presented in the 75th anniversary books of South Heidelberg Township and the Wernersville Borough as written by local resident Calvin Becker. He states that early meetings were held in a cabin located in *Ernst’s Woods* in Lower Heidelberg Township. His son, Barry, places the cabin on the west side of Heffner Road. Esther, wife of Bud Rhine, believes that remains of the cabin are nearby her property.

The general belief is that meetings were held as early as 1934. You might be surprised to know that the organization’s title was not derived in honor of the environs of our beautiful and fertile Lebanon Valley. Instead, it was adopted from the *Lebanon Valley House*, the hotel that Dr. James W. Deppen constructed in 1871 along West Market Street, (West Penn Avenue) in Wernersville. It was there that subsequent meetings were held and the club was further organized. Details of the Association’s early history are limited to Court records, a few photos, local newspaper articles and legends since no minutes of meetings prior to 1944 can be located.

The LVSA was not yet incorporated when their 52-acre chunk of South Mountain was purchased on June 1, 1937. This is where the club

house was soon to be erected and stands today. The land was bought for \$600 from John and Claire Degenhardt of Long Island, New York. It had become their property, obtained from Emma S. Rahn, in May of 1926. Becker stated that the land had been part of the Berkshire Furnace and had been the home of the Matthew Boyer family. Portions of their building complex remain on the site to this day.

The Constitution was formed and Articles of Incorporation as a non-profit Corporation, were submitted on June 22, 1937. The charter was granted on July 6, 1937 and was recorded on July 16 in Berks County Charter Book Vol.12, Page 563. The incorporators were: Charles A. Gruber, President; Roy J. Fritz, Vice-President; Herbert Ney, Recording Secretary; George F. Briner, Jr., Financial Secretary and Earl R. Zimmerman, Treasurer. These officers and George Briner, Irvin Schannauer, Rufus Brossman, John Hill and William V. Hassler comprised the Board of Directors. LVSA assets were listed as Real Estate, \$600; Cash, \$250; and Target Trap, \$40.

A membership book of those early years shows that the club was an immediate success with hundreds of our residents, (limited to men only),

having paid their dues of 50 cents per year. Today, membership qualifications are as follows:

Junior members - All American citizens upon reaching their 12th birthday, and being of good moral character and reputation are eligible for Junior Membership.

Associate members - All American citizens upon reaching the age of 16 years, and being of good moral character and reputation are eligible for Associate Membership.

Regular members - All American citizens, 18 years of age or older, being of good moral character and reputation shall be eligible for Regular Membership provided they have been an Associate member for at least one year and have actively participated in club functions and meetings.

Life members - Any active Regular member, who through the years has given outstanding service and dedication to the Association, upon reaching the age of 65, may be elected into life membership by a majority vote of the regular membership present at any regular meeting. Life Membership meaning that said member will enjoy all the privileges of regular membership, but will not be required to pay dues or assessments.

Unlike the requirements for membership which experienced significant changes, a steady focus was maintained upon the purpose of the Association as currently stated:

- (a) To promote the preservation and propagation of game and fish of all kinds in the Commonwealth of Pennsylvania.
- (b) To restock fields, woods and streams with game and fish.
- (c) To plant and re-plant trees and shrubbery.
- (d) To maintain and purchase property and to maintain streams suitable for the preservation and propagation of game and fish.
- (e) To maintain a home for the social enjoyment and recreation of its members.
- (f) To conduct programs in hunter education and other activities to promote safety.
- (g) To make young people and the public in general aware of our environment, and to cause a realization that the stewardship of nature is our responsibility.

Much of the construction and site development work was done using membership labor on weekend work parties. Two of these three work party photographs are not dated but all appear to have been taken by the same photographer on the same day... Sunday, August 29, 1937.



Sunday, August 29, 1937 - Members work to clear area for construction of new clubhouse. Foreground, (l to r), Rufus Brossman, unknown, T. Adam 'Butz' Koch, William 'Billy' Titlow, Charles Gruber & Lewis 'Louie' Moyer. Background, (l to r), 2 unknowns, Victor Smith, Marvin Krick, Herb Ney, John Hill & Ed Krick.



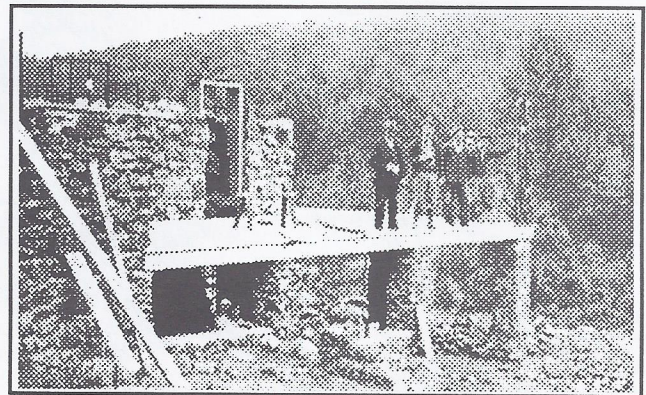
(l to r), Charles Gruber, Clarence Schaeffer, Marvin Krick, William 'Billy' Titlow & Roy Fritz. Note: The origin of the truck remains unknown. It was not listed as an asset within the Articles of Incorporation as submitted.



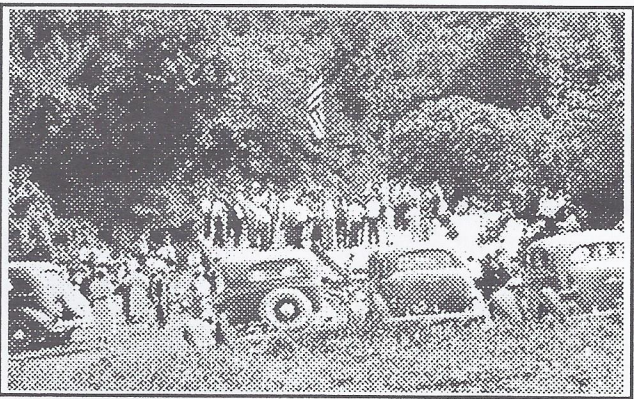
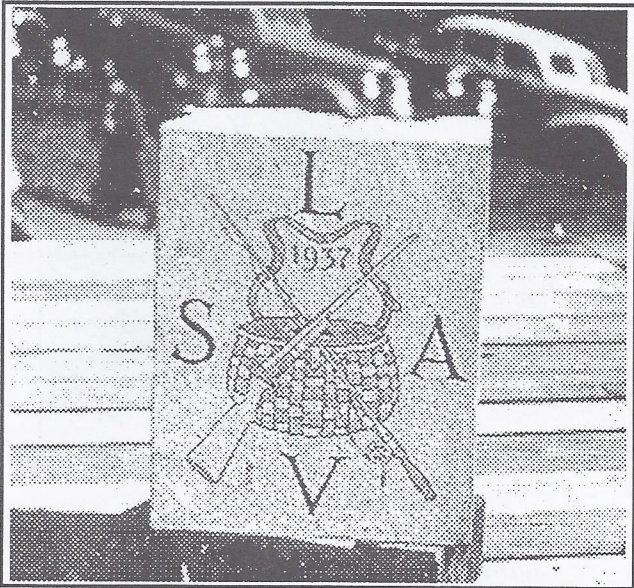
(l to r), Back: Irwin Schannauer, Herman 'Woody' Klopp, Paul Krick, Raymond Rank, Marvin Krick, Ed Krick, Charles Kinney & Herb Ney. Foreground: Bud Rhine, John Hill, Henry Reiss & George Reed.



Early Lower Level Construction



Construction Continues on the Second Level



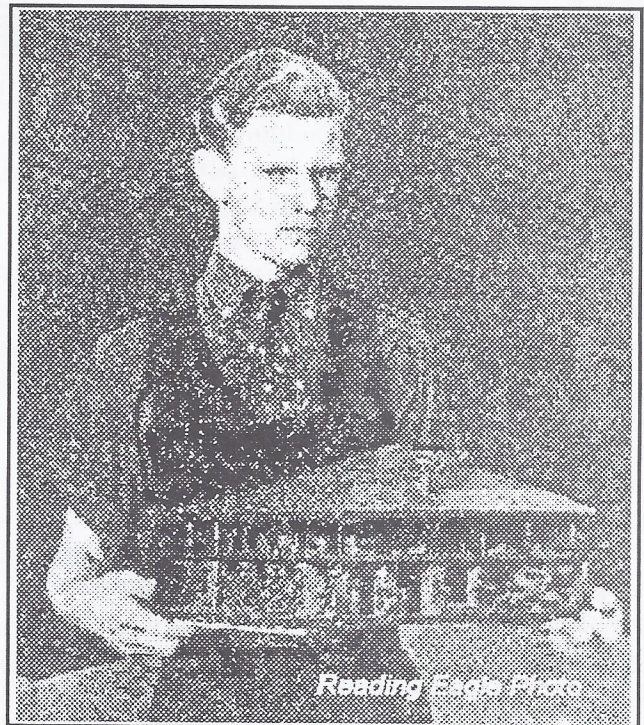
CLUB PLACES CORNER STONE

Reading Eagle, September 13, 1937 - Corner stone laying exercises were conducted by the Lebanon Valley Sportsmen Association at their new club house here (Sunday, August 12, 1937). These special exercises were attended by several hundred persons. The stone, donated by Thomas Batdorf, Myerstown, was placed by Tobias Ochs, and confirmed by Charles Gruber. Thomas Bordner presented a

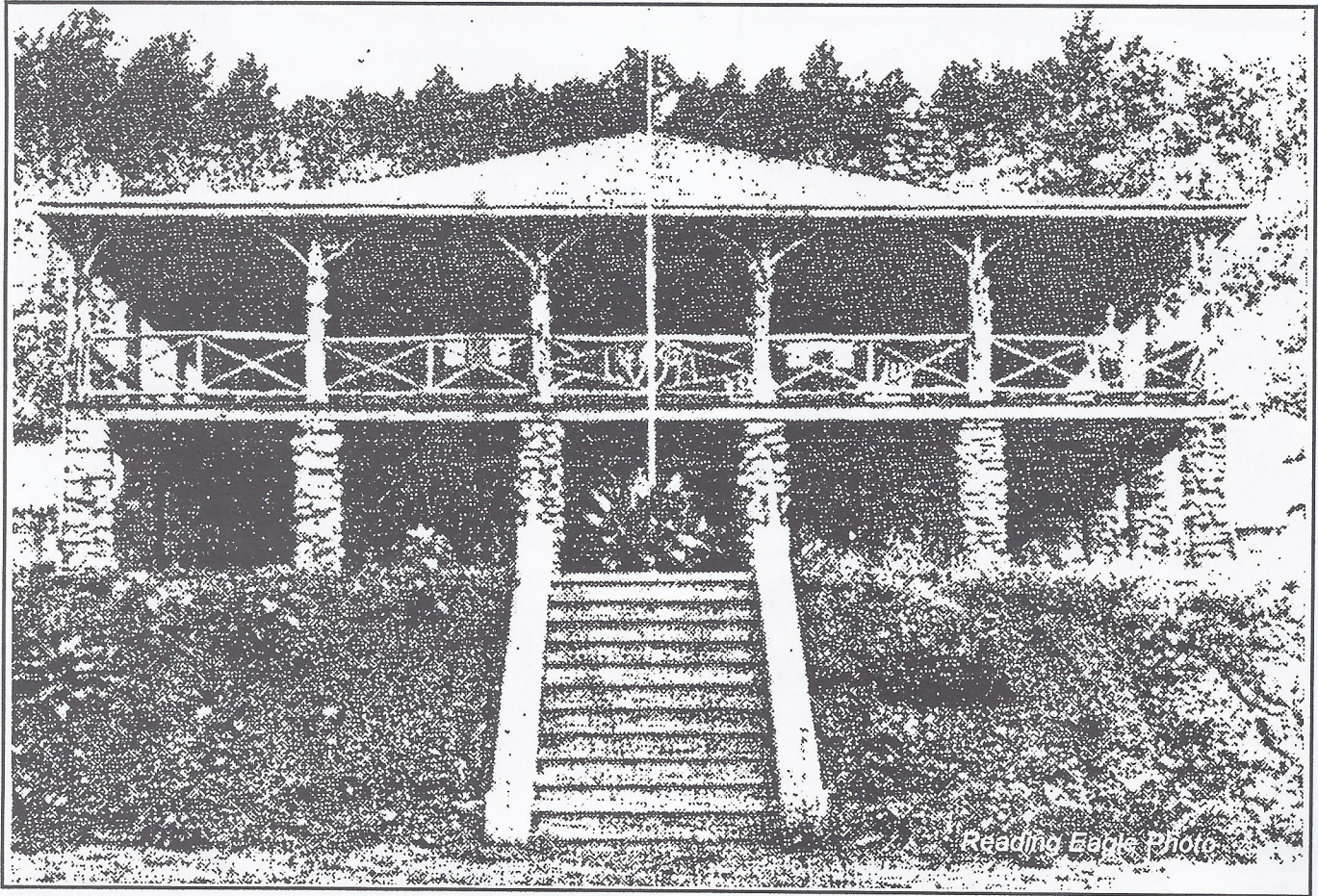
history of the sportmen's unit. William B. Wounderly, Berks County fish warden, delivered a talk on conservation in which he urged everyone to "be a sportsman and conserve our fish and game."

Sportmen's Club Erects New Building

Reading Eagle, November 30, 1937 - The Lebanon Valley Sportsmen Association is making good progress in the erection of the club house, which is a two-story stone building, when completed will be one of the finest in the state of its kind. The membership of the club is upwards of 700.



Reading Eagle - 1938 - Arlington Brossman wins the first prize with the bird house he constructed in the contest sponsored by the Lebanon Valley Sportsmen Association. The bird house is an exact replica of the club house recently erected on South Mountain by the Association.



LEBANON VALLEY CLUB COMPLETES NEW HOME

Members Construct Own Building Of Native Stone
Reading Eagle, September 24, 1939 - Standing amidst a clearing on a valley slope in the South Mountains, southwest of Wernersville, is a monument to the united effort on the part of a group of outdoorsmen - the home of the Lebanon Valley Sportsmen Association.

Visitors must travel a mile over woodland roads to reach the 52-acre domain of the association. It leads directly to a clearing, covering several acres, crosses a stony, mountain stream and leads directly to the headquarters.

The visitor's first impression, as he glimpses the spacious native-stone structure, is of admiration both for the building and its picturesque site. The high building faces south. A wide veranda extends along the front, east and west sides. Constructed of native mountain iron-stone, it has an air of permanency and comfort which blends into the rustic wooded background afforded by the mountain slopes.

The Lebanon Valley Sportsmen Association was incorporated in 1937 and purchased 52 acres of semi-wild land in the hills southwest of the Wernersville State Hospital grounds. Rich in historic

lore, the land purchased by the sportsmen was part of a large farm which had been standing idle for a generation and the once fertile cultivated fields and orchards had become overgrown with second growth mountain timber and dense underbrush.

Members Dig Cellar

Undaunted by poison ivy, hordes of wood flies and other pests, the sportsmen cleared several acres of land and dug a cellar for their present headquarters. All members regardless of occupation, helped in the task, but it was when the lodge began to take shape that specific members - carpenters, stone masons and plumbers - were called for professional advice and supervision.

During the course of the extensive landscaping, the bed of the nameless stream that wends its way down the valley was changed by the tons of dirt dumped from the grading into its channel. No definite figures were offered, but it is estimated that thousands of dollars were saved in landscaping and construction of the lodge by the volunteer labor of the membership. All labor except the stonemasonry was done by members. Paul Krick, president during the first year of the club's

organization and a carpenter by trade, is largely responsible for the rustic railing around the veranda. Krick and his assistants combed the mountainside for limbs suitable for the railing and even constructed a centerpiece of wood with the letters "LVSA."

The high veranda from the front and west sides gives an incomparable view of the valley and surrounding forest, while the entire eastern range as far as Reading is spread out to the gaze from that side of the building.

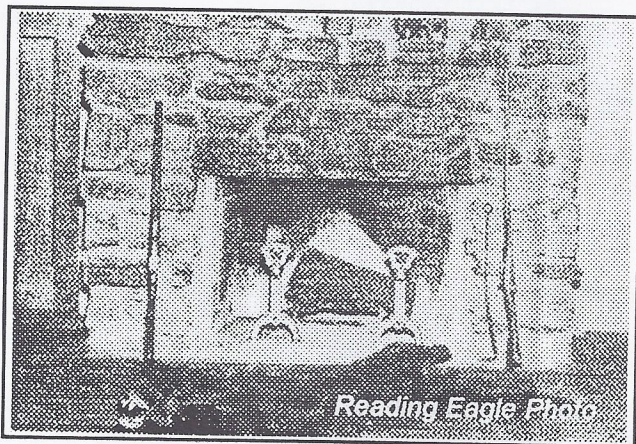
The lodge contains a grill, lavatories and several storage rooms on the ground floor and a unique and cozy social room and kitchen on the second floor.

Attractive Stone Base

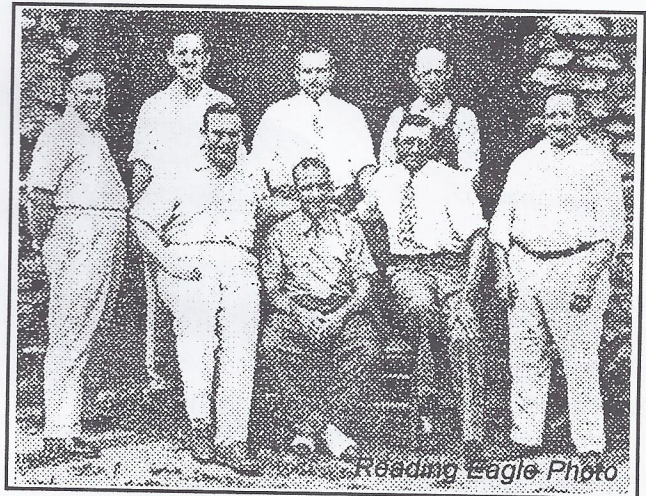
A feature of the Grill Room is the large ornamental bar constructed of stone from every township in Berks County, many counties of Pennsylvania, several states in the union and a dozen Canadian provinces. The stones were secured by members during vacation jaunts and contributed by game and conservation officials at the request of the Association. A stone from the tomb of Buffalo Bill is among the intricate workings of the bar.

Both floors are equipped with open fireplaces, but also heated by large wood-burning "monkey stoves." Dozens of mounted deer heads, pictures of outdoor activities and other mounted specimens decorate the wall of the main room, while a low paneled ceiling gives an effect pleasing to the imagination.

Well-lighted by large windows on all sides, the room is also equipped with artificial lighting by means of a large "bottled gas" system. Excellent drinking water is provided from a large enclosed mountain spring located high enough above the lodge to provide a sufficient flow for all kitchen and



The main fireplace is complete in every detail, even to the bearskin rug on the floor



1939 Officers are (l to r): Irvin Schannauer, Robert Mull, Financial Secretary.; Roy Fritz, President; Earl Zimmerman, Treasurer; and John Hill. In the rear are Directors: Thomas Bordner, Charles Bright and Rufus Brossman. Missing from the photo are William V. Hassler, Vice President; Herbert Ney, Secretary; and Herbert Knoll. These men comprise the Board of Directors.

sanitary use.

Two automatically controlled traps facing due east provide excellent facilities to devotees of wing shooting. The white fliers sail down the valley, simulating wildly flying pheasants, grouse or quail. A background of woods, stream and valley provides a realistic setting seldom found in shooting grounds.

New Pistol & Rifle Range

Members have recently constructed a pistol and small-caliber rifle range facing the mountainside to the west of the club house. An archery range will soon be erected on the grounds in recognition of the growing popularity of this ancient sport.

The valley in which the Association's headquarters is located, together with a chain of similar geographic formations in the immediate vicinity, is rich in historic lore.

According to ancient legend, streams flowing down from the mountains were used to run mill wheels during the Revolutionary War days and several hundred Hessian mercenaries, captured by American troops at the Battle of Trenton and smaller skirmishes, were employed at these mills.

Finding the climate and German-speaking people to their liking, these soldiers stayed on after the close of the war and inter-married with the local residents. Today many of their descendants are to be found in Berks, Lancaster and Lebanon Counties.

Club's Early Years

The Lebanon Valley Sportsmen Association was organized in 1934 with 18 original members, and had its headquarters in the Lebanon Valley House in Wernersville. To-day the club membership is well over 300 and includes citizens from every walk of life interested in outdoor sport.

Original Officers of the Association were: Paul Krick, President; Charles Gruber, Vice President; Harold Aulenbach, Secretary; Adam Gaul, Treasurer and Harry Swartz, Financial Secretary. This small but industrious group constructed an indoor rifle and pistol range in their basement headquarters. After a year in the Lebanon Valley House, the club moved to the Wernersville Fire Company and remained there until moving to their present location.

Officers during the second year of the club's history, (1935), included Charles Gruber, President; Rot J. Fritz, Vice President; Harold Aulenbach, Secretary; Adam Gaul, Treasurer and Harry Swartz, Financial Secretary. The Association purchased a trap during this year and conducted several white flyer shoots at Penn Werner Park to raise funds for conservation purposes.

During the extremely cold winter of 1936, members of the association were among the most active of the county club units in distributing feed and constructing game shelters.

The Association, since its inception, has purchased and released hundreds of rabbits, pheasants and quail in surrounding hunting areas and stocked local streams with game fish. Staff members during 1936 were Charles Gruber, President; George Briner, Sr., Vice President; Herbert Ney, Secretary; Earl Zimmerman, Treasurer and Harry Swartz, Financial Secretary.

Officers during the first year of the club's occupancy of its new home, (1938), were Thomas Bordner, President; George Briner, Sr., Vice President; Herbert Ney, Secretary; Earl Zimmerman, Treasurer; Harry Swartz, Financial Secretary and Trustees: John Hill, Irvin Schannauer and Rufus Brossman. (Note: The 1937 Officers were previously listed in Charter of Incorporation.)

An Account Book from 1938 lists \$27.30 to A.R. Schannauer for locks and 300 keys. \$7.50 went to the Shillington Building Company for the brass bar rail. \$34.88 was paid to the Reading Company for rails to construct the bridge across the stream.

Sportsmen to Open Carnival on Friday

Reading Eagle, June 13, 1938 - The Lebanon Valley



Sportsmen Association is ready for the opening of its carnival in Penn Werner Park Friday evening. The Ozark Mountain Troupe will be the opening attraction, and on Saturday evening Reg Kehoe and His All Girl Marimba Band.

Biggest Bass Contest Opens

Reading Eagle, September 13, 1938 - Lebanon Valley Sportsmen Association is sponsoring a bass fish contest, open to all Berks County fishermen. Contestants are to bring their fish to Schannauer's store to be weighed and measured. The name, address and place where fish was caught are required. Either large or small-mouthed bass are eligible. The contest will run to the end of the bass season in November. Three worthwhile prizes will be awarded to the winners.

Memories

My Dad, Lewis "Louie" Moyer, was not a charter member of the Association. He is listed in the membership book of 1937, he participated in all the week-end work parties that placed the LVSA on the mountain and was an active and faithful lifetime supporter. I was too young to know or remember those early days, but hold warm memories of many visits, good times and good friends "at the club."

There was always work to be done and work parties to do it long after the club house was completed. My Dad was there and I was always eager to go along. My Mother and a few other wives also went along to prepare meals and help with cleaning and various light work activities. It was always like an "outing", entertaining and educational. I marveled at the amount of work that was accomplished and how the men enjoyed their fellowship, and even the hard

work. There was always a lot of good-natured kidding and horse-play, but I don't recall ever witnessing anger or disrespectful behavior. I always felt welcome and it was nice being known as "Little Louie."

My memories include the hand pump on the counter in the kitchen to draw water from the spring and the gas lamps that seemed to always need new "wicks." Upon arriving one evening we found the door broken and the wood stoves stolen. I really liked the "BIG" truck that was always parked under the west porch. Getting it started was always a high-light of each working day. In the photos, I now see it wasn't big at all. It was also fun exploring the shooting range to hunt for clay pigeons that weren't hit and didn't break when they landed. I was warned to watch out for snakes, but never even saw one.

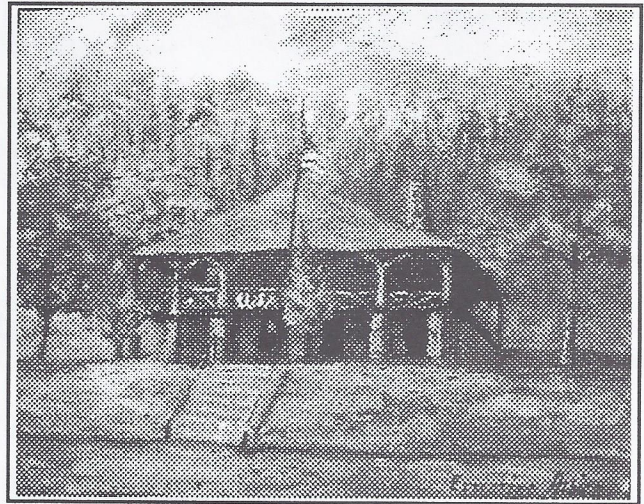
After the work, there was always something different and good to eat... pretzels, chunks of fresh cabbage, someone gathered water cress from the stream... we ate these as snacks... clam bakes were spectacular... my mother baked a shad dinner for the whole crew... you could even eat the bones !!! They worked hard, ate well and played hard. Everyone knew the words to '*The Schnitzel Bank.*'

I'll never forget one cold wintry day. A freezing storm had left the mountain road unsafe for driving. We parked the car by the Hospital dam and decided to walk the rest of the way, just as the sun "came out." The ice, frozen on each twig, branch and stem of every tree, became a shining glass tunnel covering the clean snow and ice carpeted floor. We were walking through a crystal castle... I can't recall any experience being any more beautiful. A few minutes earlier it was just ice and snow and the sun which created the "show" soon melted it all away.

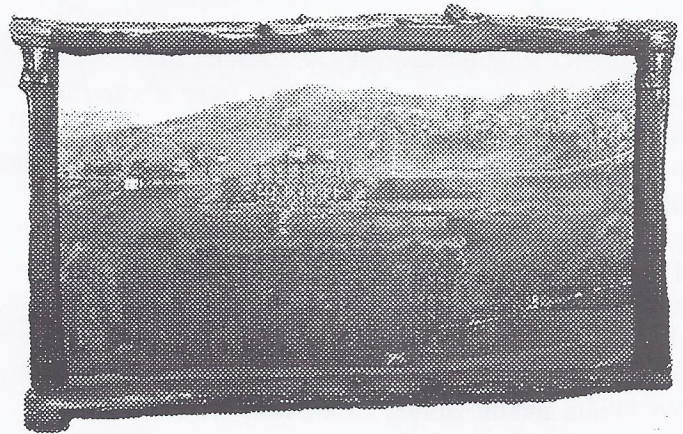
I learned to play cards watching pinochle and poker games. I learned to hunt and safely handle guns from my Dad. The men at the LVSA "shoots" also provided good examples of gun safety. I enjoyed the many "tall tales" that were exchanged along the bar as the hunters reported on their adventures. These included their pursuits for the good-eating, common morel mushrooms as well as all species of fish and game. The places where mushrooms were to be found was always kept secret... as they are today.

Paintings

Two oil paintings are displayed in the Social Room. One, by Ernestine Albiez of Reading was presented to the Club in 1944. Sadly, we know nothing about this artist nor her connection to the LVSA. The second painting evokes another of my memories. The artist, Clarence Schaeffer, was my very first barber. His



LVSA by Ernestine Albiez ca. 1944.



LVSA by Clarence Schaeffer, ca. 1940

shop was in the living room of his home, the first house along the railroad, west of Beckley Street and the painting hung on the west wall directly opposite of the barber chair. On each visit, I would always search for the animals that he had hidden among the trees in his painting. Following his death, our family was in attendance as his belongings were offered at auction. I wanted my Dad to purchase the painting, but was told that everyone was informed it was to be purchased and presented to the Association. This action was confirmed as the minutes of April 5th, 1945 reported that Clarence 'Dosal' Riegel, son-in-law of 'Barber' Schaeffer, presented the painting to the Club.

The Association was represented by Roy Fritz and Hubert Miller to appear before the State Liquor Board at a meeting in Allentown in February 1945 to apply for a beer and liquor license. The application was forwarded to Judge Schaeffer of the Berks County Courts and a license in Reading that was about to expire "was lifted" (transferred) to the LVSA on April 6th, 1945.

In November 1945, the Wernersville Boy Scouts requested and were given permission to construct a 'sizable building' for overnight camping on the southwest corner of the LVSA property. John 'Dick' Ketner helped to clear the area and Scoutmaster John Greth did much of the work in constructing the shelter that has continued to serve the local scout troops to this day.

Electric Service was brought to the club in 1947 and Sportsman's Road was paved for the first time that same year. The first television set was placed in the Bar room in 1948. The cost was \$325.00.

A bounty of \$2.00 for each fox that was shot by a member of the LVSA or a local hunter was set in 1949. Homer Rishel, LVSA member, received \$30 for the 15 foxes he bagged in March of that year.

Fish Ponds

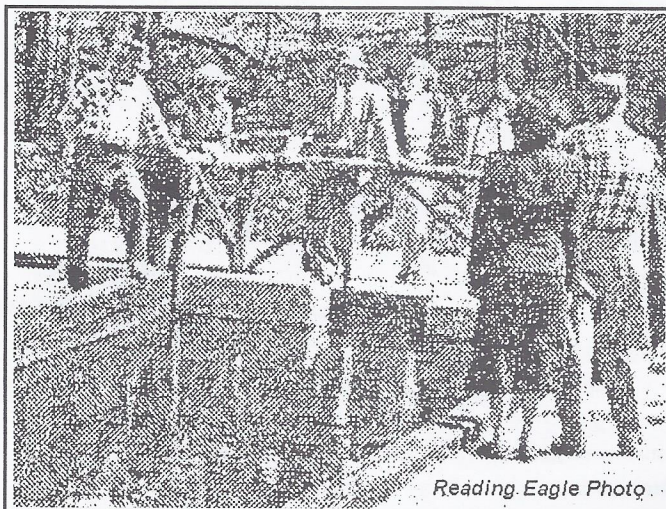
The construction of trout-rearing ponds was started during the Summer of 1949. Adult trout were purchased in previous years as they were stocked in local streams. 'Fingerling' trout would now be provided by the Pennsylvania Fish Commission, free-of-charge, to be fed and raised prior to stocking. The ponds were dedicated at a special program on May 9th, 1951. 2,850 'fingerlings' had been fed twice each day and had grown to a length of 8 to 12 inches in less than a year. A *Reading Eagle* report stated that they were about to be stocked in the Furnace Creek, near Robesonia and the Spring Creek, near Wernersville. A special children's fishing pond was also to be established in Mac (Turner?) Moore's meadow, a mile west of Wernersville. A similar program was conducted more recently in the Fisher pond beyond Stitzer Avenue.

The early LVSA ponds were lined with railroad ties that had been procured by Earl 'Pop' Zimmerman, then Forman of the local Reading Company Maintenance Crew. The wooden ties required repeated adjustment and replacement. The pools were rebuilt using concrete construction in 1969. The early pools were constructed at the cost of \$2,000. Their concrete replacements cost practically nothing thanks to the generosity of the Contractor, Reading Alloys, and the work of LVSA members. There is no official count, suffice it to say... many thousands of trout, rabbits, pheasants, quail, and grouse have been stocked by the LVSA in our local streams, ponds, fields and woodlands.

Rifle and pistol ranges are maintained on the initial tract of land that lies north of Sportsman's Road. These ranges are available for the use of all members and their guests. Among the primary safety



Fish Pond Construction - 1949
(l to r), Paul Krick, Brevard Lord, Wm. 'Billy' Titlow, Warren Weidman, John Yoh, (front), Marvin Krick.



Fish Pond Dedication - May 4th, 1951
Note: Railroad Tie Borders.

rules are the use of paper targets only and the prohibition of firing any form of automatic weapon.

An additional 90-acre tract of land on the South side of Sportsman's Road was purchased from Charles Werner in 1951. Archery Ranges and an archery course was created through this woodland for the use of advanced archers and hunters. Access to this area is limited to paying members and their guests. A nominal annual charge is asked to defray the costs of targets and bales of straw.

Land & Title Disputes

Action to secure a new Deed for the LVSA real estate was initiated in 1944. The original 1937 Deed had never been updated to recognize that the Association's

name had been changed when it was incorporated later that same year. A Court action was eventually required to correct this oversight.

The boundaries of LVSA land were questioned when neighbors started to harvest lumber, first in the northwest corner of the property and later within the southern parcel of land. In both cases the identity of line markers within the descriptions of early deeds invited alternate interpretations. The early surveys of adjacent mountain properties are frequently found to be inconsistent. The disputes were settled with the loss of a small amount of land and compensation payment in the respective cases.

Policies & Services

Over the years, women have been admitted into membership. Military personnel on active duty are given membership free-of-charge. Local farmers that allow their lands to be hunted have also been awarded free membership.

Hunting and Safety classes are given annually to beginning hunters of all ages and are offered to all residents of the community. A special program of 22 caliber, rim-fire rifle shooting joint competition is available to boys and girls. Strict rules of safety and procedures have provided guidance resulting in mature sportsmanship and accomplished marksmanship. The

competition has also been conducted between teams from the neighboring Cushion Peak and Cocalico Sportsmen Associations.

Funds are raised during special events in addition to the collection of membership dues and profits resulting from the foods and beverages that are sold across the bar in the grill room. The major events are 'Shoots' involving 12 gauge shotguns and clay pigeons (White Fliers). The shoots are typically held once or twice each month all year-round and are governed by the Tri-County, (Berks, Lebanon & Lancaster) Sportsmen's League. Practise shoots are regularly made available for members and guests.

Lebanon Valley Sportsmen Association

WERNERSVILLE, PA

HAM RAFFLE

Sun., March 18, 2007

(25 Hams)

Donation - \$2.00 -- 3 for \$5.00

EGG SHOOT -- 9 am

Flying Block Shoot -- 11 am

11:00 A.M. Till ??

TURKEY SHOOT

Lebanon Valley Sportsmen's Assn.

WERNERSVILLE, PA.

SUNDAY OCTOBER 23, 1960

12:00 Noon

ENTERIES CLOSE AT 3:00 P.M.

PROGRAM

50 16 yard Targets and Turkeys - \$4.00
1 Turkey to Each 4 Shooters

OPTIONALS

Lewis Class on 50 Targets - 3.00
Divided 50, 30, 20% Not more than 3 Classes

This is also the first of a 6 months Winter Series Shoots
Scores from this shoot will be credited to Series

\$150. added money and trophies to be awarded at March Shoot

Shooters must Shoot 4 out of 6 Shoots to be eligible for added money and Trophies.

SHOOT DATES.

Sunday — October 23, 1960

Sunday — November 27, 1960

Monday ~~SATURDAY~~ December 24, 1960 *Dec 26*

Sunday — January 22, 1961

Sunday — February 26, 1961

Sunday — March 26, 1961

Remember our Fall night Block Shoot October 21, 7:00 P. M.

Lunch - Refreshments - Shells for Sale - Everybody Welcome

Shoot Committee.

Raffles and novelty shoots are also held on occasion. For example, the ticket identifies a shoot where boards and eggs are tossed above a safety barrier as targets to test the shooters skill. The winner of a board shoot is determined by the shotgun pellet that is closest to the center of a figure X that is cut onto the board prior to its toss. Rifle and Archery competitions involve both stationary and moving targets. The LVSA has never held any shoots using live animal or bird targets.

Another source of income has been through the sale of barbecued chicken on various Sundays during the summer months. (Watch for the sign along 422 at Sportsman Road.) Thanks to the care of Ray Freeman, the club's chief cook, there's no better chicken to be found anywhere in the whole state!

Credits

Assistance to the research of this report was given by Brad Gregoris, Jerry Davis, John Ketner, Debbie Hoover Patterson, Gene Diefenderfer, Joe Sickler, Judy Becker Frankfort, Barry Becker, Frances Sheidy, Fred Rhine, Esther Gaul Rhine, Pearl Ernst, Ed Schoenagle, Floyd Krick. and staff members of the Berks County Recorder of Deeds and Prothonotary Offices.

**DATES & EVENTS - HEIDELBERG HERITAGE SOCIETY
OCTOBER 2007 - DECEMBER 2008**

Wednesday October 24, 2007
Friday & Saturday November 9 & 10
Sunday December 7, 2007
Tuesday February 5, 2008
Thursday February 28, 2008
Thursday March 27, 2008
Thursday April 24, 2008
Friday May 16, 2008
Thursday May 22, 2008
Saturday June 14, 2008
Thursday July 24, 2008
Thursday August 28, 2008
Friday September 19, 2008
Thursday September 25, 2008
To be scheduled in October 2008
Friday & Saturday November 7 & 8
Sunday December 7, 2008

Annual Sauerkraut Supper
31st Christmas Bazaar
Holiday Open House & Tea
Fastnacht, Soup & Sandwich Sale
General Meeting
General Meeting
General Meeting
Sandwich Sale
General Meeting
Flag Day Celebration
General Meeting
General Meeting
Sandwich Sale
General Meeting
Annual Sauerkraut Supper
32nd Christmas Bazaar
Holiday Open House & Tea

HEIDELBERG HERITAGE SOCIETY

182 West Penn Avenue, P.O. Box 51, Wernersville, PA 19565
tel: 610 678-6202



*Home of Heidelberg Heritage Society, Inc.
formerly the Lerch Tavern built in 1797*

NON-PROFIT ORG.

U.S. POSTAGE

PAID

WERNERSVILLE, PA 19565
Permit No. 25